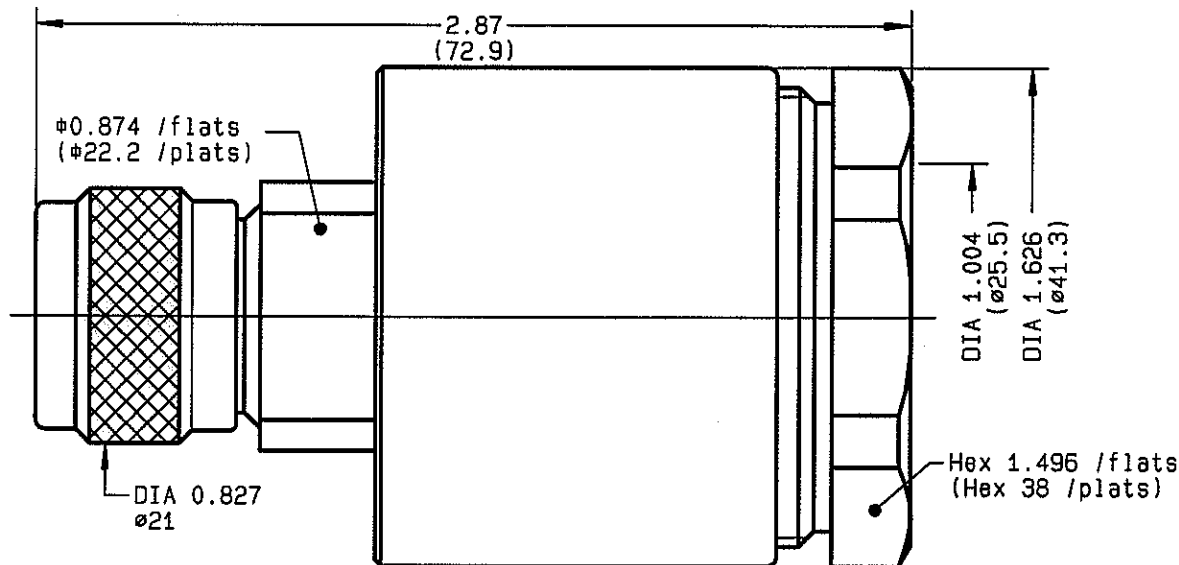


**STRAIGHT PLUG CLAMP TYPE  
CABLE 50 GD**

**R161.032.000**  
SERIES **N**



NOMINAL IMPEDANCE	<b>50</b> $\Omega$
FREQUENCY RANGE	<b>0-11</b> GHz
TEMPERATURE RATING	<b>-55/+155</b> °C
V.S.W.R	<b>1.30*</b> + x F(GHz)Maxi
RF INSERTION LOSS	<b>.10</b> $\sqrt{F}$ (GHz) dB Maxi
VOLTAGE RATING	<b>1400</b> Veff Maxi
DIELECTRIC WITHSTANDING VOLTAGE	<b>2500</b> Veff Mini
INSULATION RESISTANCE	<b>5000</b> M $\Omega$ Mini
HERMETIC SEAL	<b>NA</b> Atm.cm <sup>3</sup> /s
EAKAGE (pressurized only)	<b>NA</b>
MECHANICAL DURABILITY	<b>500</b> Cycles
WEIGHT	gr
SPECIFICATION	<b>* 0-3 GHz</b>

CABLES :

OTHERS CHARACTERISTICS

CABLE RETENTION	<b>400</b> N Mini
CENTER CONTACT RETENTION	
Axial force - mating end	<b>NA</b> N Mini
Axial force - opposite end	<b>NA</b> N Mini
Torque	<b>NA</b> cm.N Mini
RECOMMENDED TORQUES	
Mating	<b>130</b> cm.N
Panel nut	<b>NA</b> cm.N
Clamp nut	<b>1200</b> cm.N

CONNECTOR PARTS	MATERIALS	FINISH	(all values are given in micrometers)
BODY	BRASS	BBR 2	
OUTER CONTACT	BRASS	BBR 2	
CENTER CONTACT	BRASS	GOLD 0.5 OVER NICKEL 2	
INSULATOR	PTFE	-	
GASKET	SILICONE RUBBER	-	
OTHERS PIECES	BRASS	BBR 2	

QUERIN

ISSUE	CREATION DATE	FILE PART-NUMBER
<b>9809N01</b>	<b>02-APR-76</b>	<b>EPC 96-07</b>



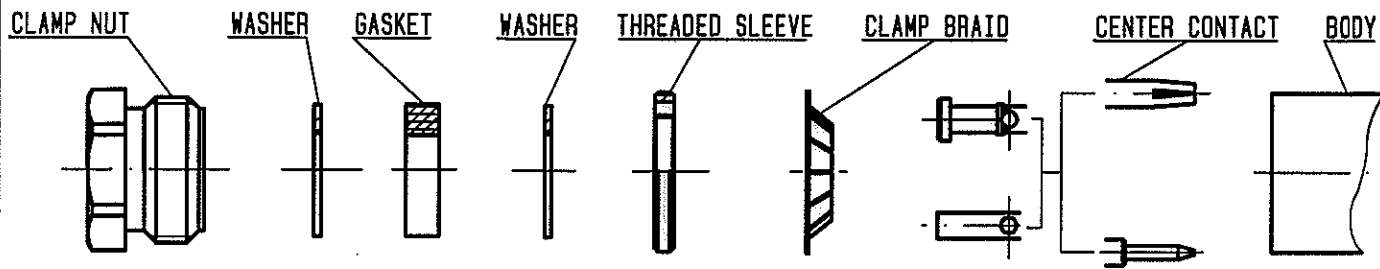
The information given here is subject to change without notice. Design changes may be in order to improve the product .

Connect to the future



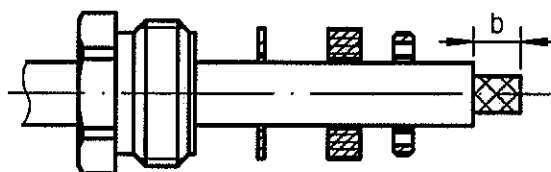
**R161.032.000**

ISSUE 9809N01 SERIES N



①

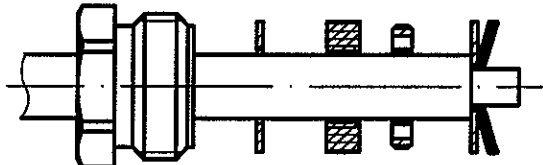
Slide clamp nut, washer, gasket, threaded sleeve on the cable.  
Strip the cable.



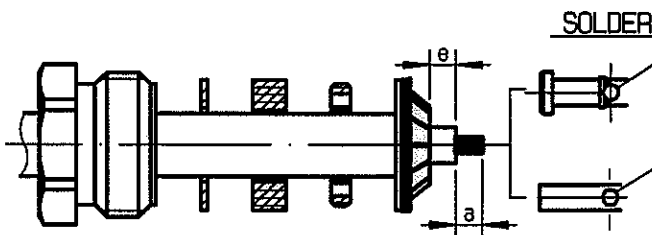
Stripping	a	b	c	d	e
inch	0.177	0.63	0	0	0.236
mm	4.5	16			6

②

Slide the washer.  
Fold back braid and trim it to diameter of washer.

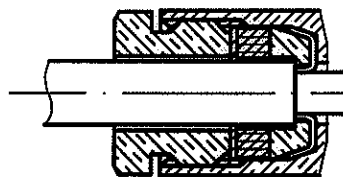


Slide clamp braid sleeve over braid.  
Trim back dielectric as shown.  
Solder center contact.



④

Screw and tighten the threaded sleeve with the help of the peg spanner R282.310.  
Screw sub-assembly into the connector body.  
( recommended coupling torque 106.2 in.lb )



Hex. : 1.496 /flats